

Job offer

BIM Engineer

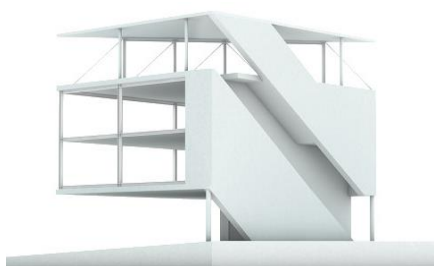


Eisfeld Ingenieure, a German company offering state-of-art structural engineering solutions, is to open a new office in Vilnius, Lithuania. The company will look to enlarge the team in the coming years.



Job description:

- Support the engineering team on one or more projects using your expertise in Building Information Modeling;
- Use modeling best practices to produce accurate models (TEKLA Structures);
- Create drawings for elements such as cast-in place or precast concrete;
- Coordinate drawings and models from disciplines and use BIM to identify and resolve construction conflicts.



Requirements:

- Bachelor or Master degree in structural engineering;
- Good English or German language skills;
- Understanding of construction processes (precast and cast in place);
- Work experience in the field of structural engineering (advantage);
- Knowledge of BIM software (Tekla Structures, SketchUp etc.).



UAB Eisfeld Engineering offers:

- Competitive salary;
- Professional training in Germany and Lithuania;
- Flexible work schedule;
- Work laptop for personal use;
- Possibility to have "Workations".

If you believe you have the necessary knowledge, experience and enthusiasm to succeed in this position, then we would like to hear from you.

www.e3p.de/en
vilnius@e3p.de
8-650-59036